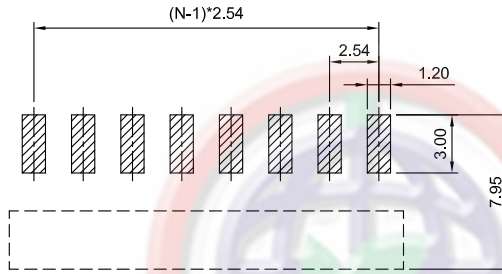


The information provided herein is from CONNELY Electronic Co., Ltd. and is confidential. Any disclosure to a party other than the recipient is prohibited. The intellectual properties and its rights contained herein, including but not limited to, trademarks, patents, copyrights, trade secrets, and technical know-how, are owned exclusively by CONNELY or its affiliates. Unauthorized use of this information in any format or manner. CONNELY may enforce its intellectual property rights at its own discretion; failures or delays to exercise such rights does not constitute a waiver of such rights.

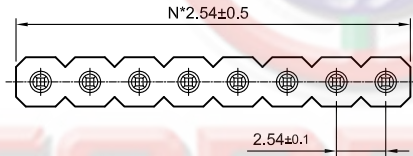
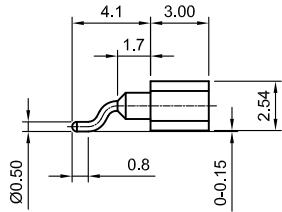
Female 4 Fingers



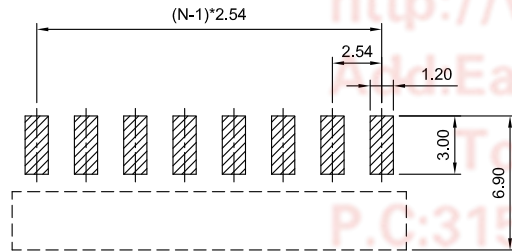
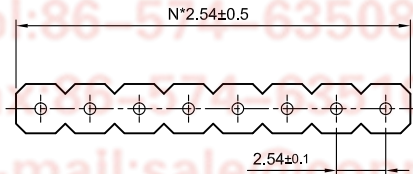
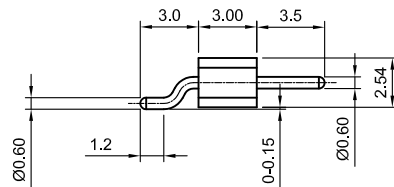
4 CONTACT POINTS



Recommended PCB Layout
Tolerance=±0.05



Male



Recommended PCB Layout
Tolerance=±0.05

REV.	DESCRIPTION	DRAWN	CHECKED	APPROVED
A	NEW RELEASE	LJC 10/06/13'		LJC 10/06/13'
B	DRAWING UPDATE	JLZ 02/24/17'	HZW 02/24/17'	LJC 02/24/17'
C	DRAWING UPDATE	JLZ 03/02/19'		

NOTES:

1.Materials:

- 1.1. Insulator: High Temperature 260°C,UL94-HB Rated, color of white or black,RoHS,REACH compliance.
- 1.2. Pin: Copper Alloy, Plating Matt Tin or Gold.
- 1.3. Clip: Beryllium Copper, C17200,Full Gold plating.

2.Specifications:

- 2.1. Temperature Range: -55~+125°C,(Full Gold Plating).
- 2.2. Contact Resistance: 10mΩ maximum.
- 2.3. Insulation Resistance: 1000MΩ minimum.
- 2.4. Dielectric Withstanding Voltage: 500V AC 1 minute.
- 2.5. Voltage Rating: 24V AC/DC.
- 2.6. Current Rating: 3A max per pin.
- 2.7. Application insert pin: Ø0.381~Ø0.635mm.
- 2.8. Resistance to soldering heat: 260°C,3-5seconds.
- 2.9. Durability: 1000 cycles min.

3. Product Number Code:

DS1137-05 - X X X X X X

- Packing Type
R: Tape On Reel.
- Clip plating(Female Only)
6: Full matt tin.
8: Full gold flash.
C: Full 3u" gold.
- Pin plating
6: Full matt tin.
8: Full gold flash.
- Housing Color
W: White
B: Black
V: Ivory
- Connector Type
F: Female
M: Male
- No. of positions
1x1p ~ 1x40p

GENERAL TOLERANCE		ANGLE TOLERANCE	
X.	±0.60	X.	±5°
.X	±0.38	.X	±3°
.XX	±0.25	.XX	±2°

DRAWING TYPE	CUSTOMER		
SCALE	1:1	SHEET	1 OF 1
DRAWING NO.	C-DS1137-05-XXXXXX-C		

PROJECTION	TITLE
	2.54mm Led Series Connector SMT Type(Female 4 Fingers)
UNITS	mm
SHEET SIZE	A4
SERIES	DS1137-05 SERIES

晨翔电子有限公司
CONNFLY CONNFLY ELECTRONIC CO. LTD