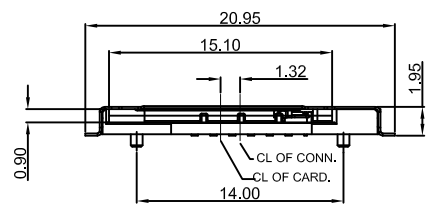
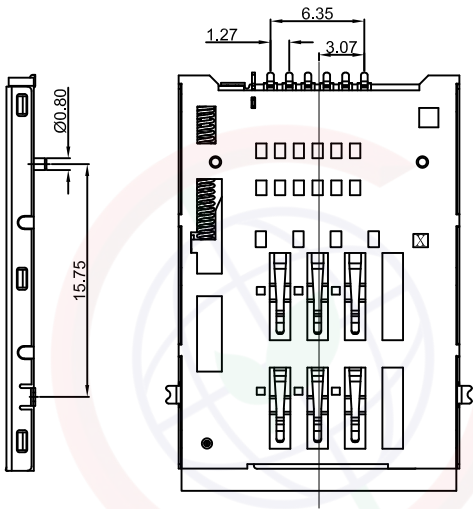
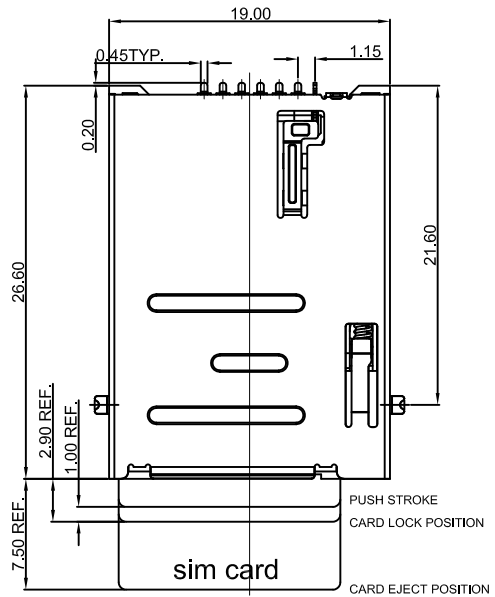


The information provided herein is from CONNELY Electronic Co., Ltd. and is confidential. Any disclosure to a party other than the recipient is prohibited. The intellectual properties and its rights contained herein, including but not limited to, trademarks, patents, copyrights, trade secrets, and technical know-how, are owned exclusively by CONNELY or its affiliates. Unauthorized use or reproduction of this drawing in any format or manner. CONNELY may enforce its intellectual property rights at its own discretion; failures or delays to exercise such rights does not constitute a waiver of such rights.

1 2 3 4 5 6 7 8

A Dept
 Qty
 DC 1
 ED 1
 IE 1
 ISO 1
 PD 1
 R&D 1
 SD 1
 QA 1
 QC 1
 QF 1
 B
 C
 D
 E
 F
 G
 H

REV.	DESCRIPTION	DRAWN	CHECKED	APPROVED
A	NEW RELEASE	JLZ 10/07/14'		
C	DRAWING UPDATE	JLZ 01/15/18'		
D	DRAWING UPDATE	JLZ 11/14/22'		
E	DRAWING UPDATE	JLZ 06/30/23'		



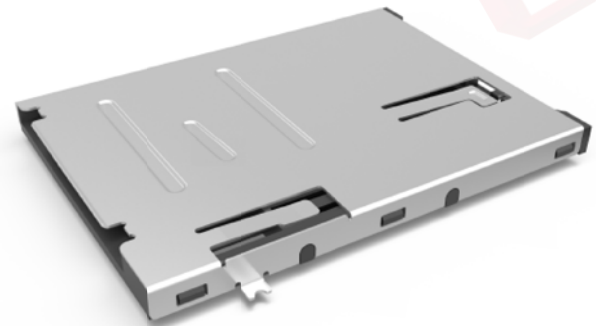
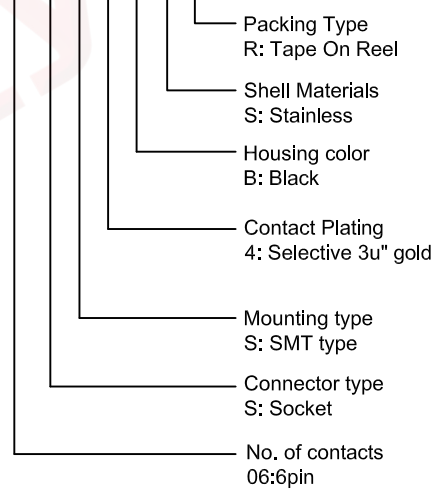
PIN ASSIGNMENTS

Connector terminal NO.	Pin NO.
Pin 1	VCC: PWR signal and GND
Pin 2	RST: Reset signal
Pin 3	CLK: Clocking signal
Pin 4	GND: PWR signal and GND
Pin 5	VPP: programming Voltage
Pin 6	I/O : serial date input/output

Notes:

- Material:
 - Housing: High Temperature, UL 94V-0 Color of Black.
 - Contacts: Copper Alloy.
 - Shell: Stainless Steel.
- Finish:
 - Contact Area: Gold Over Nickel.
 - Solder Area: Tin.
- Specifications:
 - Operating Temperature: -40° C~+85° C
 - Insulating Resistance: 100MΩ Min.
 - Contact Resistance: 100mΩ Max.
 - Withstanding Voltage: 500V AC 1min.
 - Current Rating: 0.5A.
- Product Number Code:

DS1138-04 - XX X X X X X X



(Series Image-Reference Only)

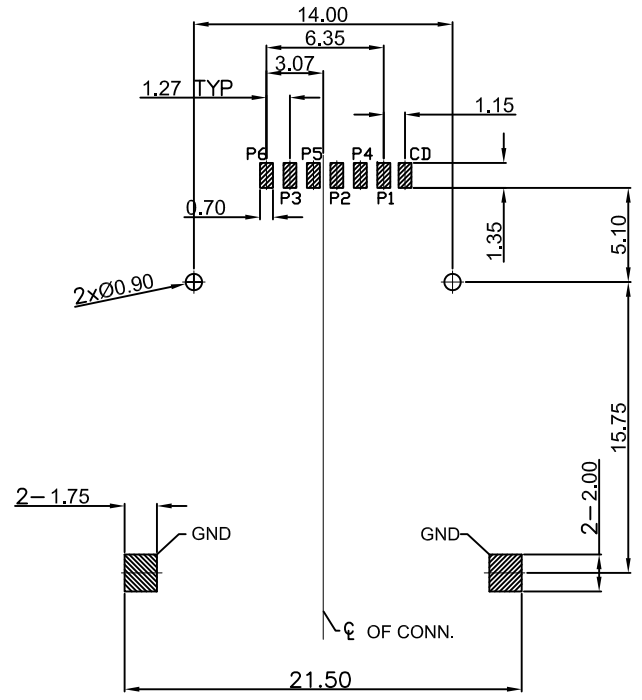
GENERAL TOLERANCE		ANGLE TOLERANCE		PROJECTION	TITLE
X.	±0.60	X.	±5°		Push Push Type SIM Card 6P
.X	±0.38	.X	±3°	mm	SMT Type W/Post H=2.0mm
.XX	±0.25	.XX	±2°	A4	SERIES DS1138-04 SERIES
DRAWING TYPE		CUSTOMER		晨翔电子有限公司 CONNFLY CONNELY ELECTRONIC CO. LTD	
SCALE		1:1 SHEET 1 OF 2			
DRAWING NO.		C-DS1138-04-XXXXX-E			

1 2 3 4 5 6 7 8

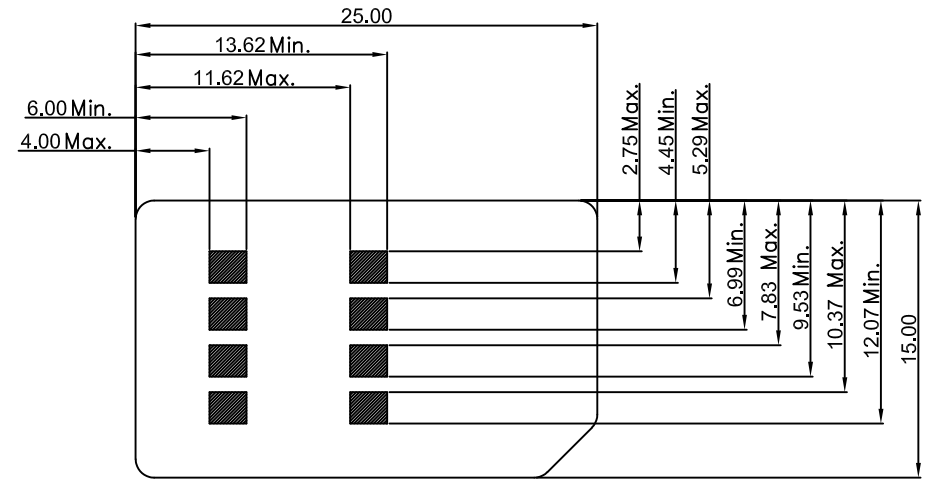
The information provided herein is from CONNELY Electronic Co., Ltd. and is confidential. Any disclosure to a party other than the recipient is prohibited. The intellectual properties and its rights contained herein, including but not limited to, trademarks, patents, copyrights, trade secrets, and technical know-how, are owned exclusively by CONNELY or its affiliates. Unauthorized use of this information in any format or manner. CONNELY may enforce its intellectual property rights at its own discretion; failures or delays to exercise such rights does not constitute a waiver of such rights.

1 2 3 4 5 6 7 8

Dept	Qty	REV.	DESCRIPTION	DRAWN	CHECKED	APPROVED
DC	1	A	NEW RELEASE	JLZ 10/07/14'		
ED	1	C	DRAWING UPDATE	JLZ 01/15/18'		
IE	1	D	DRAWING UPDATE	JLZ 11/14/22'		
ISO	1	E	DRAWING UPDATE	JLZ 06/30/23'		
PD	1					
R&D	1					
SD	1					
QA	1					
QC	1					
QF	1					

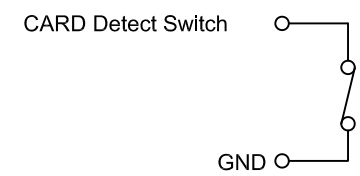


Recommend PCB layout
(Tolerance:±0.05)



SIM CARD DIMENSION

SIM CARD 6P



Normal...SHORT
Inserting Card....OPEN

GENERAL TOLERANCE		ANGLE TOLERANCE		PROJECTION		TITLE	Push Push Type SIM Card 6P
X.	±0.60	X.	±5°	UNITS	mm		SMT Type W/Post H=2.0mm
.X	±0.38	.X	±3°	SHEET SIZE	A4	SERIES	DS1138-04 SERIES
.XX	±0.25	.XX	±2°	晨翔电子有限公司 CONNELY CONNELY ELECTRONIC CO. LTD			
DRAWING TYPE		CUSTOMER					
SCALE		1:1	SHEET 2 OF 2				
DRAWING NO.		C-DS1138-04-XXXX-E					

1 2 3 4 5 6 7 8