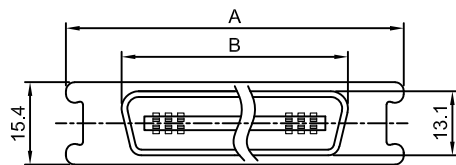


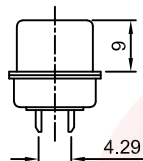
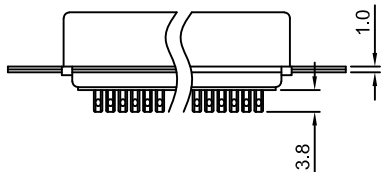
The information provided herein is from CONNELY Electronic Co., Ltd. and is confidential. Any disclosure to a party other than the recipient is prohibited. The intellectual properties and its rights contained herein, including but not limited to, trademarks, patents, copyrights, trade secrets, and technical know-how, are owned exclusively by CONNELY or its affiliates. Unauthorized use of this information in any format or manner. CONNELY may enforce its intellectual property rights at its own discretion; failures or delays to exercise such rights does not constitute a waiver of such rights.

Male Series

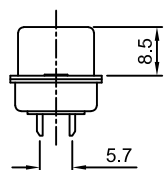
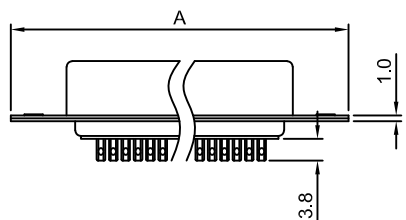
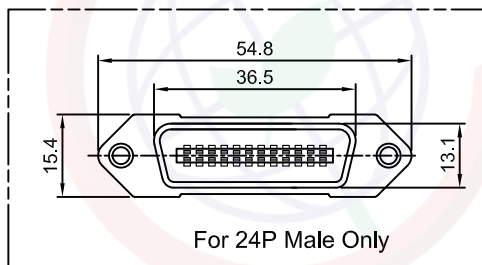
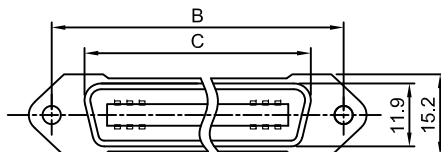


Male dimensions

Positions	A	B
14	38.5	25.6
24	54.8	36.5
36	62.0	49.4
50	77.4	64.4

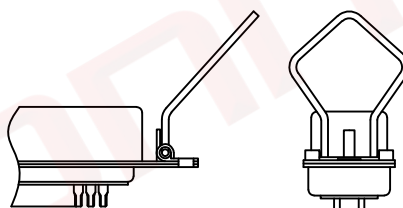


Female Series

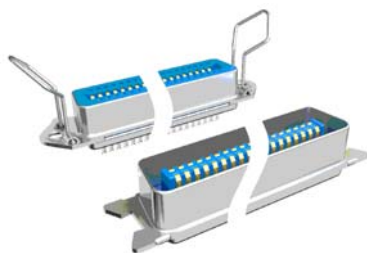


Female dimensions

Positions	A	B	C
14	43.9	36.0	25.2
24	54.7	46.8	36.0
36	67.7	59.7	48.9
50	82.8	74.9	64.1



With Latch Type
(For Female Only)



(Series Image-Reference Only)

REV.	DESCRIPTION	DRAWN	CHECKED	APPROVED
A	NEW RELEASE	LJC 01/16/09'		LJC 01/16/09'
B	DRAWING UPDATE	JLZ 12/07/19'		
C	DRAWING UPDATE	JLZ 01/12/23'		

Notes:

Specifications:

- Contact Resistance: 30mΩ Max.
- Insulation Resistance: 1000MΩ Min.
- Dielectric Withstanding Voltage: 500V AC(rms) For 1 Minute.
- Current Rating:1A.
- Temperature: -40°C~+105°C.

Materials:

- Contact Material: Copper Alloy.
- Contact Plating: Selective gold flash.
- Insulator Material: PBT,UL94-V0.
- Shell Material: Steel.

Product Number Code:

DS1039-01 - X X X X

- X: Latch Support
- S: W/ Latch(For Female)
- X: W/O Latch
- Contact plating
- 0: Selective gold flash
- 1: Selective 10u" gold
- 3: Selective 30u" gold
- Housing color
- L: Blue
- W: White
- B: Black
- Connector Type
- M: male
- F: female
- No. of Positions
- 14 24 36 50

GENERAL TOLERANCE		ANGLE TOLERANCE		PROJECTION	TITLE	Centronic Connector Solder Type	
X.	±0.60	X.	±5°		mm		
.X	±0.38	.X	±3°		A4	SERIES	DS1039-01 SERIES
.XX	±0.25	.XX	±2°				
DRAWING TYPE		CUSTOMER		晨翔电子有限公司 CONNFLY CONNFLY ELECTRONIC CO. LTD			
SCALE		1:1	SHEET 1 OF 1				
DRAWING NO.		C-DS1039-01-XXXXX-C					